

TOUCHSTONE

HOMES

660 PEPPER BEND - PARK-BACKING



THE CAPSTONE

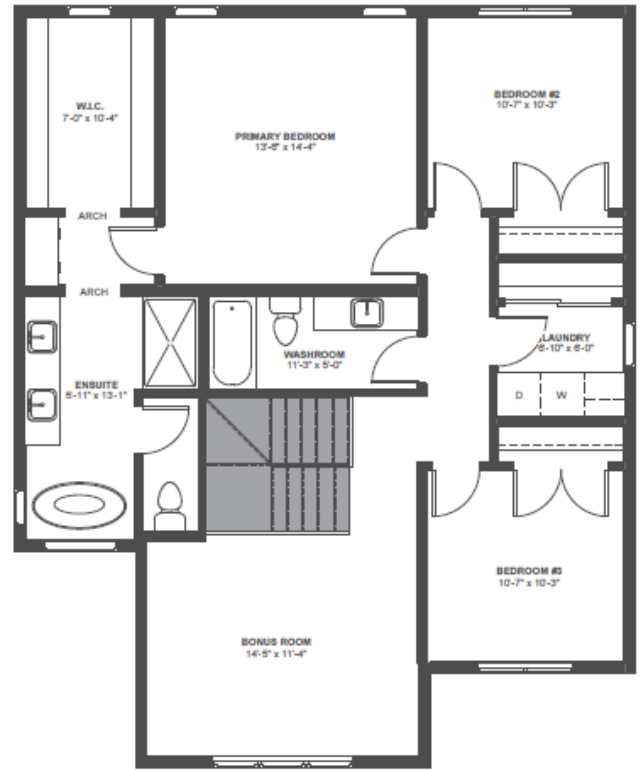
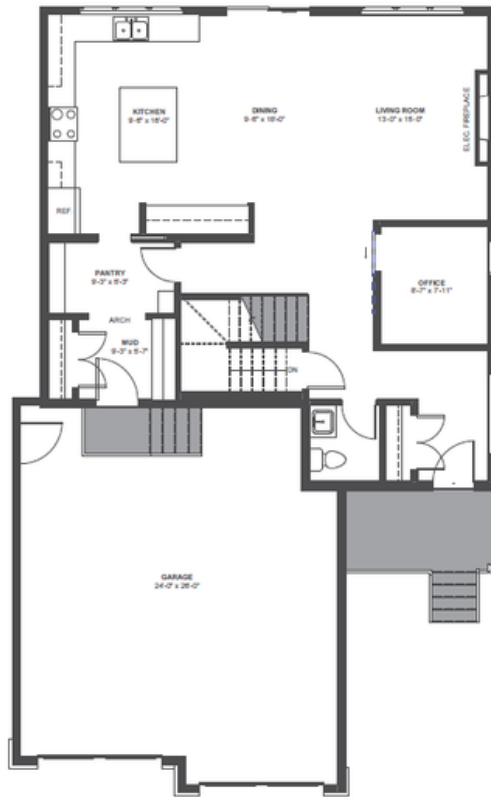
2,248 SQ.FT.
3 BEDROOMS, 2.5 BATHROOMS, BONUS ROOM
24' X 26' GARAGE



*MAY BE SHOWN WITH OPTIONAL FEATURES INCLUDING BUT NOT LIMITED TO MATERIAL, COLOURS, AND OVERALL DIMENSIONS SHOWN.

2,248sq. ft. 2-story

DESIGNER 2-STORY The Capstone



FEATURES:

- 2,248 sq. ft 2-story park-backing
- 1,041 sq. ft. main floor with office/den
- 1,207 sq. ft 2nd floor with bonus room
- 3 beds & 2.5 baths plus bonus room & laundry
- Luxury primary ensuite
- Designer kitchen with a large island, rift cut oak & painted HDF cabinetry, composite sink, and a walk-through pantry
- Fireplace with feature surround
- Large mud room
- LVP on main, carpet with 10 lb underlay on 2nd, porcelain tile in baths & laundry rooms
- Designer lighting package
- Appliance allowance \$9,800.00
- Custom ensuite tile shower
- 9'-0" ceiling height, basement & main
- 2 x 6 at 16" OC framing
- Large triple-pane energy-efficient windows
- Solar-ready truss system with conduit
- Upgraded Benjamin Moore ScuffX paint
- Electric fireplace with feature wall
- 24' x 26' garage
- Front landscaping, concrete driveway, front & side walkways
- Insulated garage with NG heat
- Air conditioning included

Finishes, features, layouts, and specifications are subject to change without notice. All images and renderings are for marketing purposes only. Please confirm final selections with the builder.