

**SOLD**



# 130 Prasad Union

## Welcome

Welcome to The Capstone. This luxury 2-story plan 2,247 sq. ft. home features an expansive open main floor with plenty of room for living and entertaining. The large and luxurious designer kitchen features plentiful storage and workspace, open shelves, a dry bar, and stainless steel appliances. Just off the kitchen, you'll find a spacious walkthrough pantry, and beyond that a convenient mudroom offering an out-of-sight place to store your everyday items. The main floor boasts a bright and airy living area, a powder room, and an office. Upstairs, the open bonus room is perfect to use as a family entertainment room, or just for unwinding at the end of the day. Down the hall from the bonus room are two generously sized secondary bedrooms, a large laundry room with ample storage, and a 4 pc bath. In the primary suite, you'll find a sanctuary for relaxation. The ensuite is bathed in natural light and features a tile shower, a stand-alone soaker tub, an expansive dual vanity with an integrated make-up desk, and a private water closet. Opposite the spa-like ensuite is an oversized walk-in closet. The Capstone offers 9-foot ceilings on the basement and main floors, 8-foot ceilings upstairs, and a large 2-car attached garage. The Capstone's spacious rooms, thoughtful layout, and designer finishes make it the ultimate place to call home! Contact us today to learn more or schedule a viewing.

# TOUCHSTONE

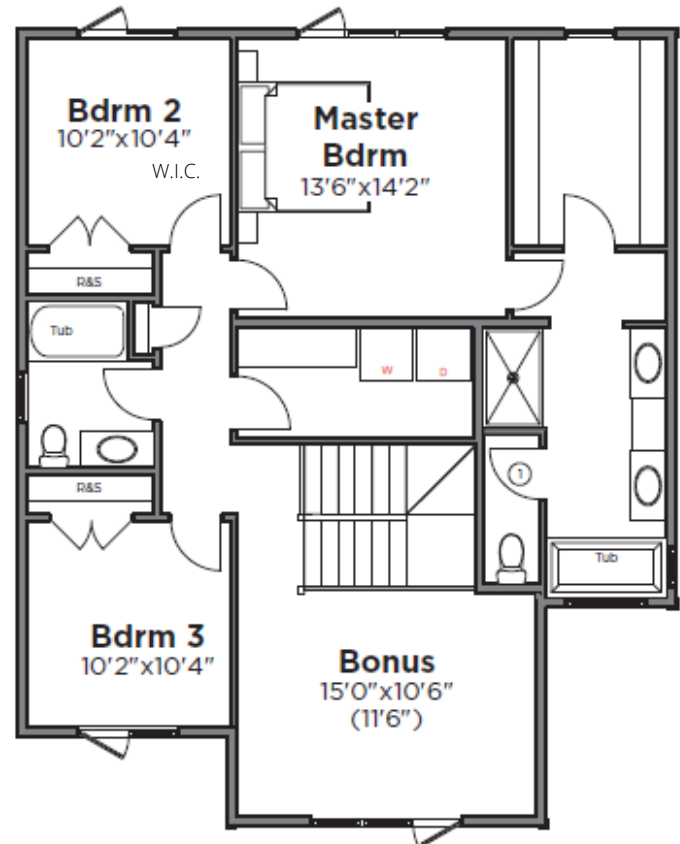
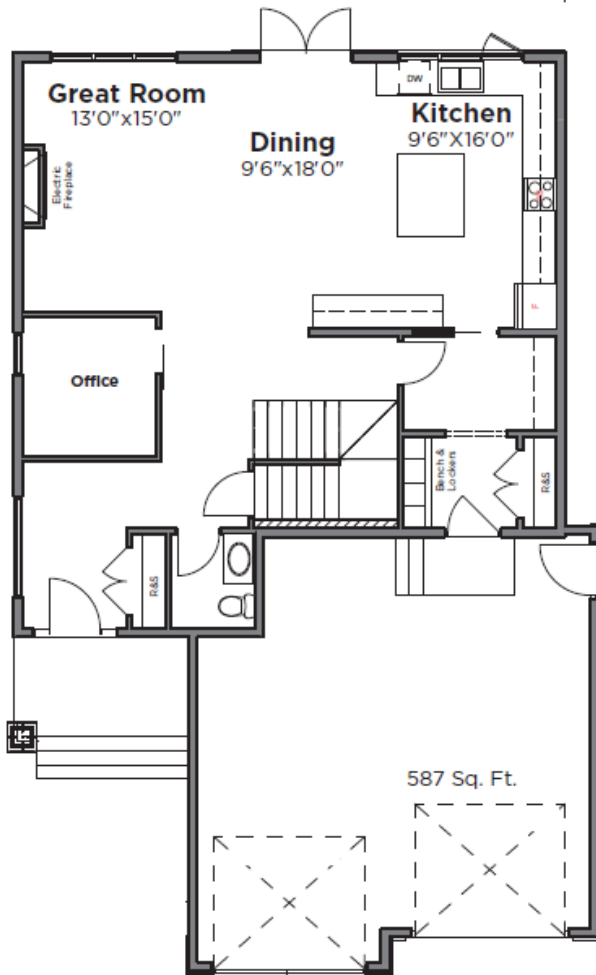
— HOMES —

# The Capstone

2247 sq.ft.

3 bed + bonus rm

2.5 bath



## Features:

- 2,247 sq. ft.
- 3 beds & 2.5 baths
- Spacious designer kitchen complete with island and dry bar
- Appliances included: Fridge, stove, DW, built-in microwave, built-in range hood, bar fridge, washer & dryer, and A.C.
- Walk-through pantry and mudroom
- Main floor office with barn door
- Electric fireplace with tile surround
- Designer lighting package
- Black plumbing hardware
- Custom accent walls in front entry & bonus room
- 9'-0" Basement, 9'-0" Main Floor, and 8'-0" Second Floor
- Oversized 24.5' x 24' garage
- Large laundry room with abundant cabinets
- Park backing with South-West backyard
- Large energy-efficient windows throughout
- Spa-like ensuite with tile shower and stand-alone tub
- Open bonus room on second floor

# TOUCHSTONE

— HOMES —